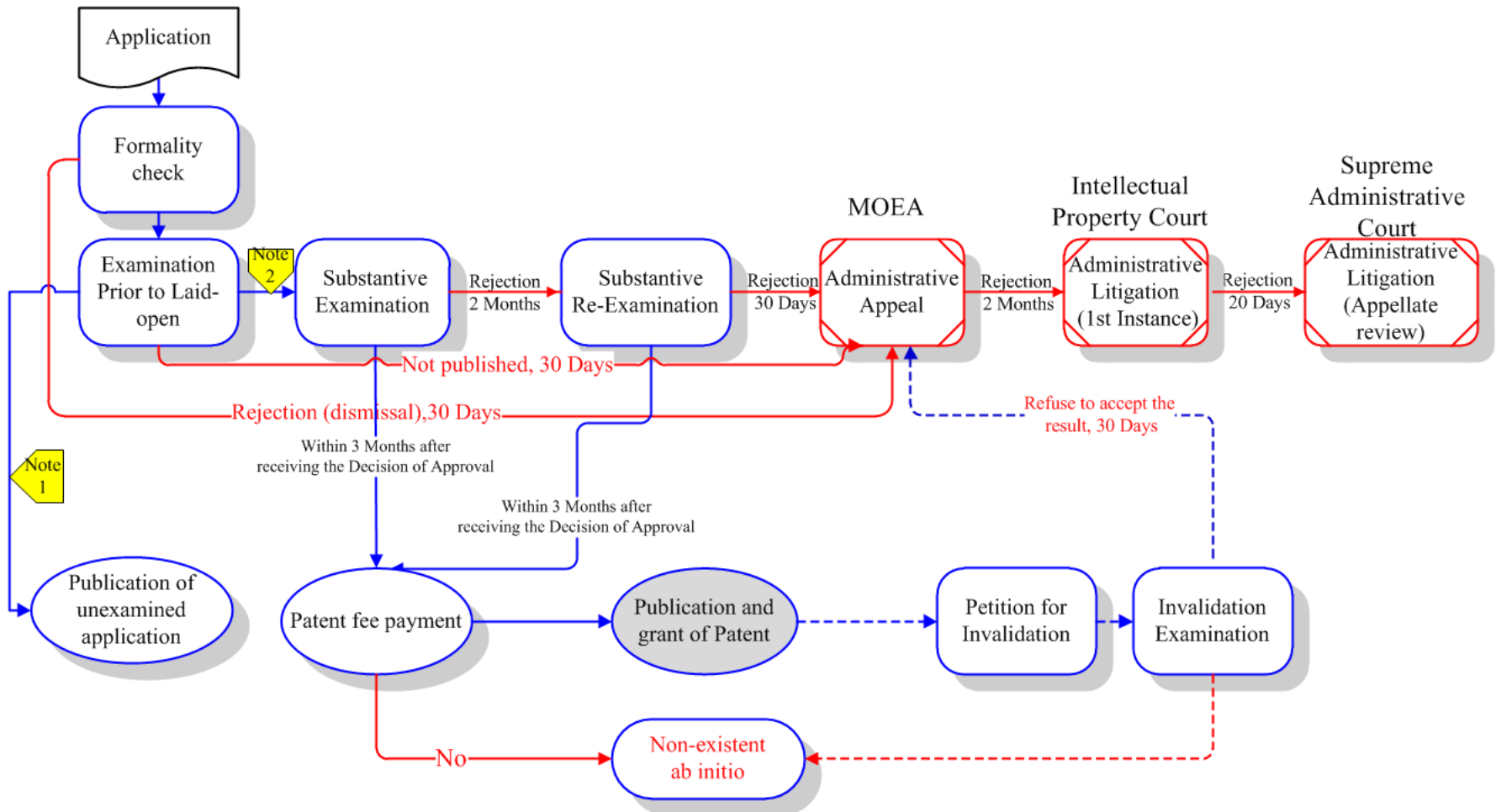


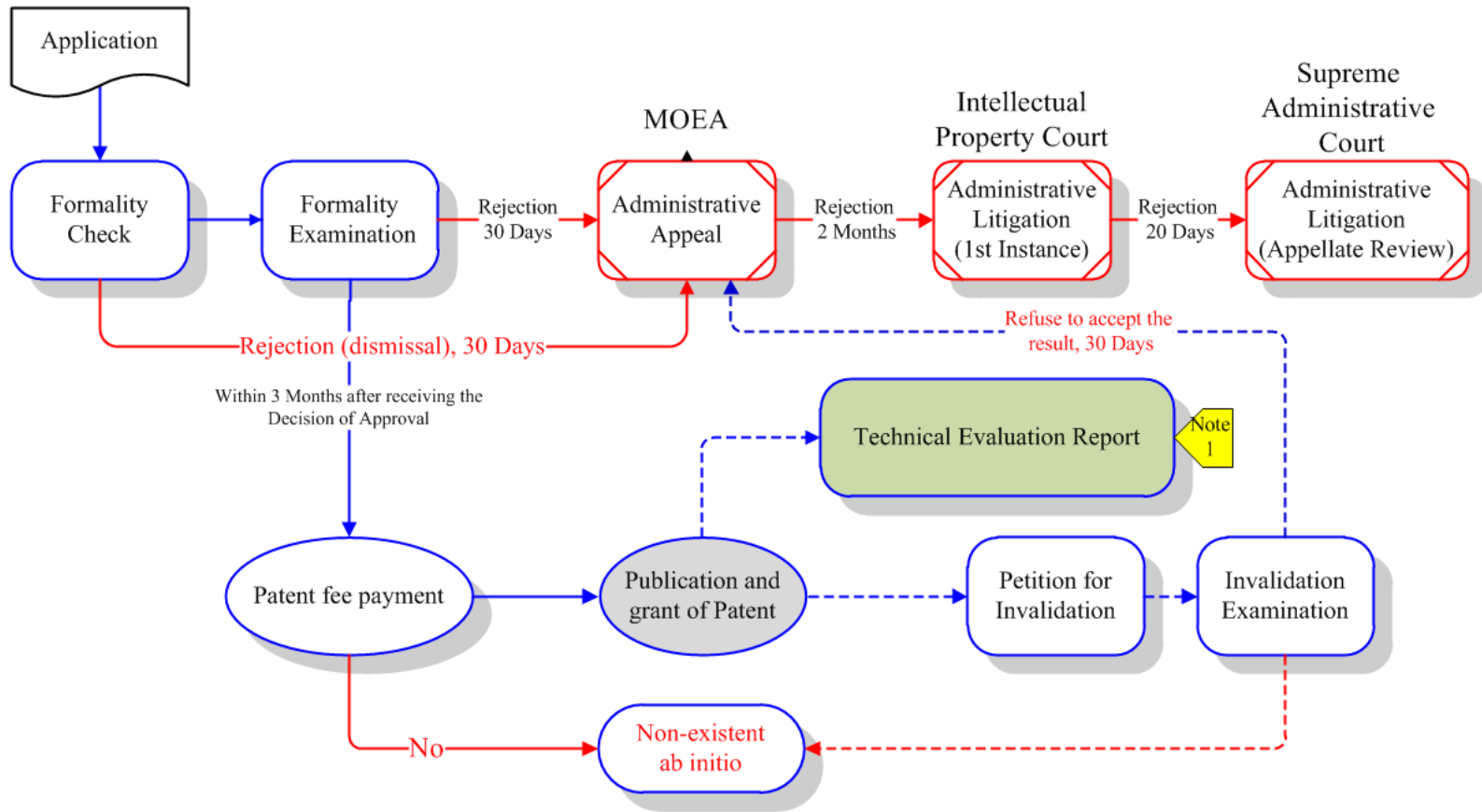
# A Flowchart on Invention Patent Examination and Administrative Remedy



Note 1: An application of invention patent, complying with stipulated formality check and containing no elements that may be deemed unsuitable for laying open through examination, shall be laid open 18 months after the filing date (or the earliest priority date).

Note 2: Substantive examination will only be proceeded upon a request filed with the TIPO by any person within 3 years from the filing date of the invention patent application.

# A Flowchart on Utility Model Patent Examination and Administrative Remedy



Note 1: After a utility model application is published, any person may apply for the technical evaluation report.

# A Flowchart on Design Patent Examination and Administrative Remedy

