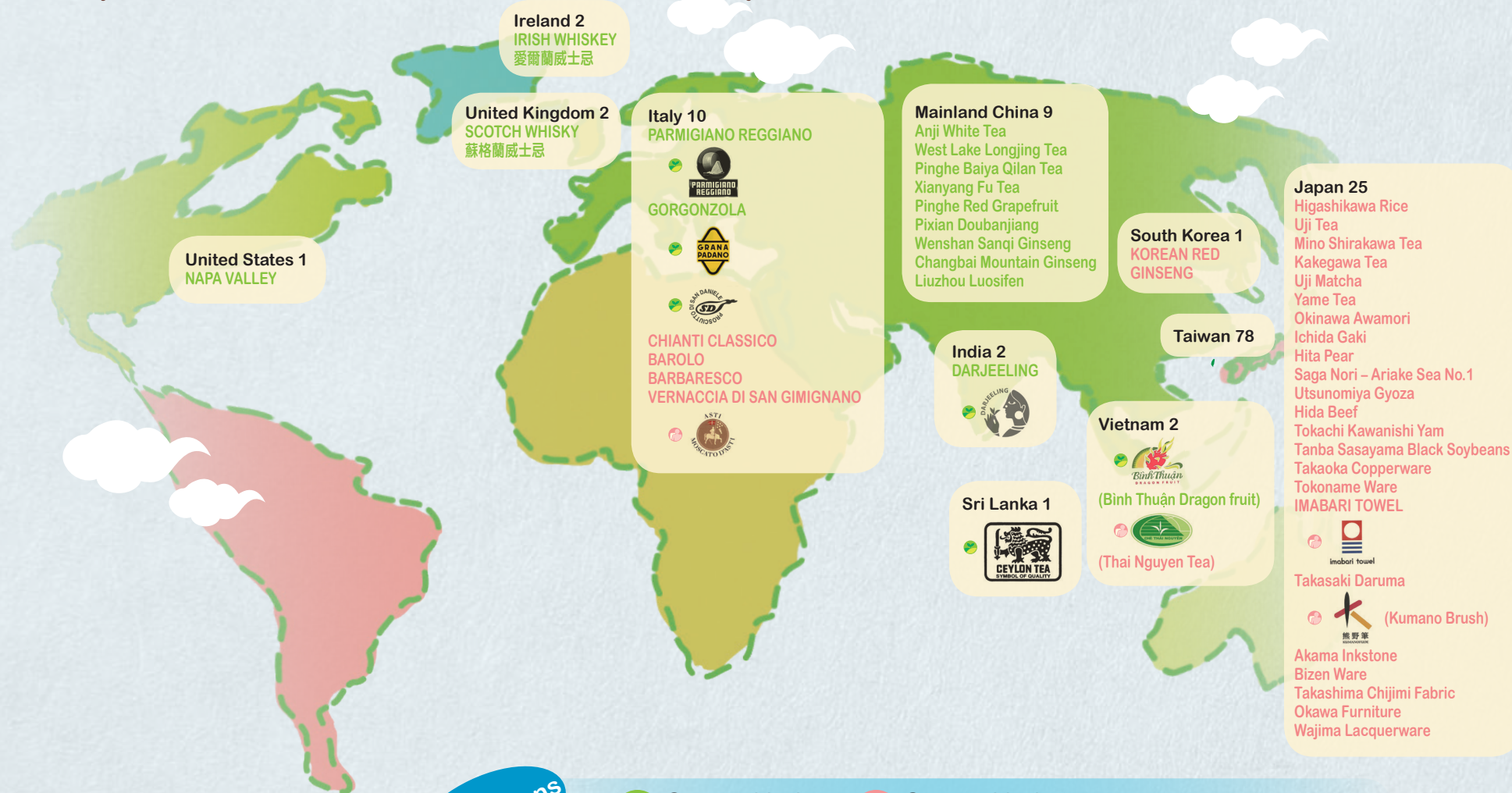
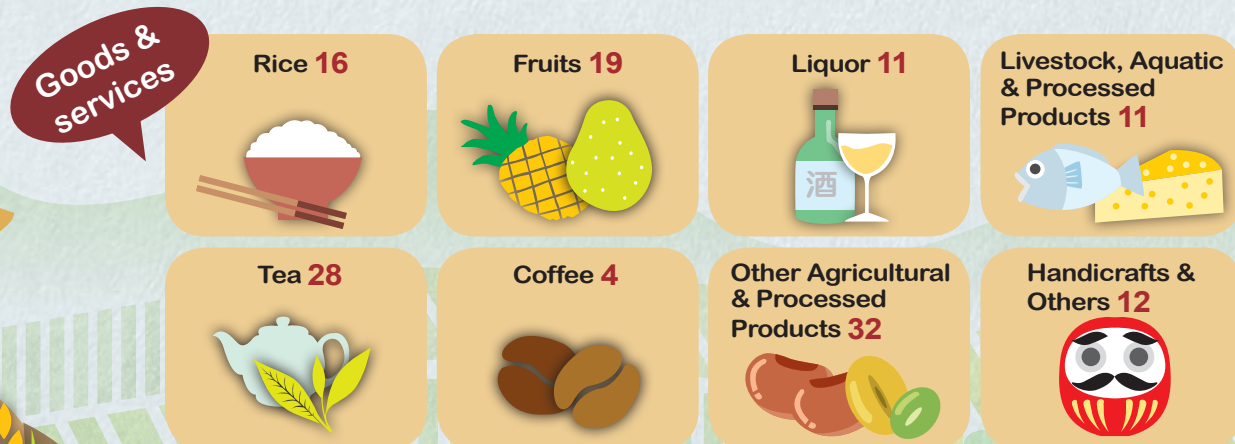


Registration Statistics



Registrations	Geographical certification mark	Geographical collective trademark	Total
Taiwan	40	38	78
Foreign	23	32	55
Total	63	70	133

2025.12.16 updated



Taiwan's System of Geographical Marks

Geographical certification mark Geographical collective trademark



Geographical Mark

Application Requirements

The mark must include the name of a specific geographical area

Application Procedure



Geographical certification mark



Geographical collective mark

A legal person, a group, or a government agency which is competent to certify another person's goods or services

An association, society, or any other group which is a legal person

Applicant

Representative Capacity
Foreign applicants may submit documents showing that the mark is protected in their name in the country of origin

Capability to supervise and control use

Required Contents of the Regulations Governing Use

1. Scope of certification
2. Conditions for use
3. Methods of management and supervision
4. Procedures for applying to use the mark and dispute resolution

1. Membership qualifications
2. Conditions for use
3. Methods of management and supervision
4. Measures for handling violations
5. Persons within the geographical area whose goods or services and qualifications meet the regulations must be admitted as members

Notes on Use

Any person who meets the conditions set out in the regulations may apply to use the mark with the consent of the proprietor; however, **the proprietor may not engage in the business of the certified goods or services**

Members who meet the conditions set out in the regulations, as well as the proprietor, may use the mark

The proprietor may not prevent others from indicating the origin of their goods or services in accordance with honest practices and customary commercial usage

Application Fee

NT\$ 5,000 per application

NT\$ 3,000 per class

Registration Fee

NT\$ 2,500 per application

NT\$ 2,500 per class

Geographical Name

Geographical certification mark

Geographical collective mark

NAPA VALLEY

BAROLO

Geographical Name + Goods / Services

池上米

麻豆文旦

Geographical Name + Goods / Services + Device

SUN MOON LAKE
日月潭紅茶
BLACK TEA

大甲芋頭

Certified or designated goods or services

Goods or services originating from the geographical area must possess specific qualities, a reputation, or other characteristics

There must be a sufficient link with the geographical environment, including:

• Natural factors

Soil, climate, wind, water quality, altitude, humidity, etc.

• Human factors

Traditional or specific production processes, methods, or techniques unique to the region

Registration Overview

Taiwan Geographical Marks



Geographical certification mark



Geographical collective mark

Taoyuan City

- 拉拉山 High Mountain Tea
- 拉拉山 Peach

Miaoli County

- Oriental Beauty Tea
- 泰安 Bamboo Shoot
- 三灣 Pear
- 銅鑼 Chrysanthemum
- 公館 Red Date
- 公館 Taro

Taipei City, New Taipei City

- 文山 Baozhong Tea
- 北投 Hot Spring Yunohana
- Yilan County
- 三星 Rice

Kinmen County

- 金門 Distillers' Grains-Fed Cattle
- 金門 Distillers' Grains-Fed Beef

Penghu County

- 澎湖 Premium Seafood
- 西衛 Handmade Wheat Noodles

Hualien County

- 玉里 Rice
- 富里 Rice
- 光復 Rice
- 豐濱 Rice
- 瑞穗 Tianhe tea
- 瑞穗 Pomelo
- 花蓮 Watermelon

Taichung City

- 梨山 Tea
- 霧峰 Fragrant Rice
- 大甲 Taro
- 大安 Scallion

Changhua County

- 竹塘 Rice

Nantou County

- 鹿谷 Dongding Oolong Tea
- 杉林溪 Tea
- 日月潭 Black Tea
- 合歡山 High Mountain Tea
- 南投市 Qingshan Tea
- 南投 Plum
- 國姓 Coffee
- 日月潭 Specialty Coffee
- 竹山 Sweet Potato

Yunlin County

- 西螺濁水 Rice
- 水林 Sweet Potato
- 斗六 Pomelo
- 古坑 Coffee

Taitung County

- 池上 Rice
- 關山 Rice
- 鹿野 Rice
- 長濱 Rice
- 鹿野 Red Oolong Tea
- 太麻里 Sugar Apple
- 南迴四鄉 Millet

Chiayi County

- 阿里山 High Mountain Tea
- 東山 Coffee
- 善化 Sesame
- 西港 Sesame
- 關廟 Pineapple
- 麻豆 Pomelo
- 下營 Pomelo
- 玉井 Mango
- 官田 Water Caltrop
- 白河 Lotus Seed
- 白河 Lotus Root Powder
- 下營 Black Soybean

Kaohsiung City

- 美濃 Beans
- 美濃 Wild Water Spinach

Pingtung County

- 恆春 Rice
- 枋山 Mango
- 獅子 Mango
- 萬丹 Red Bean
- 滿州 Black Soybean
- 恆春 Onion
- 車城 Onion
- 枋山 Onion
- 恆春 Sesame



Taiwan Intellectual Property Office

<https://www.tipo.gov.tw>

Add: 3F., No. 185, Sec. 2, Xinhai Rd., Da'an Dist., Taipei City 106213, Taiwan (R.O.C.)

Tel: +886-2-2738-0007

Fax: +886-2-2377-9875

廣告

